

Solis-Link: RF

Accessories - Solis Data Logging Device

Solis box type (gateway) + stick type (terminal) monitoring data collector, the terminal uses RS485 communication to connect to the inverter, the gateway uses wired Ethernet to connect to the home router, and the gateway and terminal are connected through RF data to realize automatic networking. The equipment is connected to the gateway automatically, free of wiring and wireless network configuration; it aims to realize a stable and intelligent operation and maintenance management plan for users.

Features:

- Plug and play, easy to operate
- No Wi-Fi configuration required, RF intelligent connection
- Stable network connection, real-time data transmission
- Remote monitoring, allowing real-time monitoring of mobile APP and Web

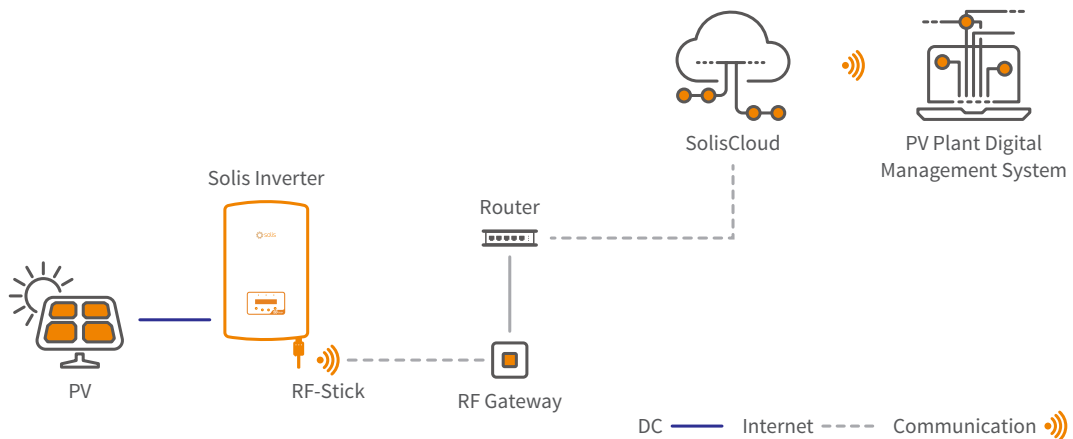


RF-Stick



RF Gateway

Intelligent Monitoring Solution - Link: RF



DATASHEET

Solis-Link: RF

| Models | RF-Stick | RF-Gateway |
|--------------------------------|---|---|
| Wireless parameters | | |
| Demodulation | | FSK |
| Data rate | | 9.6 kbps |
| Transmitting power | | +20 dBm |
| Transmitting frequency offset | | 20 kHz |
| Transmission channel bandwidth | | <8 kHz |
| Receiving channel bandwidth | | 200 kHz |
| Hardware parameters | | |
| Data interface | RS 485 | Adaptive 10 / 100 Mbps |
| Operating voltage | DC 5 V ~ DC 12 V | DC 5.0 V (+/-5%) |
| Max. working voltage | 15 V | 12 V |
| Operating power consumption | | 1.5 W |
| Indicator light | System running Status--RUN Light Inverter Connection Status--COM Light RF Connection Status--RF Light | System running Status--RUN Server Connection Status--SER RF Connection Status--RF |
| Operating humidity | 10%-90%, relative humidity, non-condensing | |
| Storage temperature | -45 ~ +90°C | |
| Storage humidity | < 40% | |
| Software parameters | | |
| Number of connected inverters | 1 | / |
| Serial communication rate | 9600 bps (adjustable:1200-57600 bps) | / |
| Data collection intervals | 5 minutes | / |
| Link requirement | / | CAT5 shielded network cable length <50 m |
| Mechanical | | |
| Dimensions (L*W*H) | 47*41*160 mm | 90*23*90 mm |
| Weight | 130 g | 80 g |
| Protection degree | IP 65 | IP 21 |
| Others | | |
| Certification | CE | |